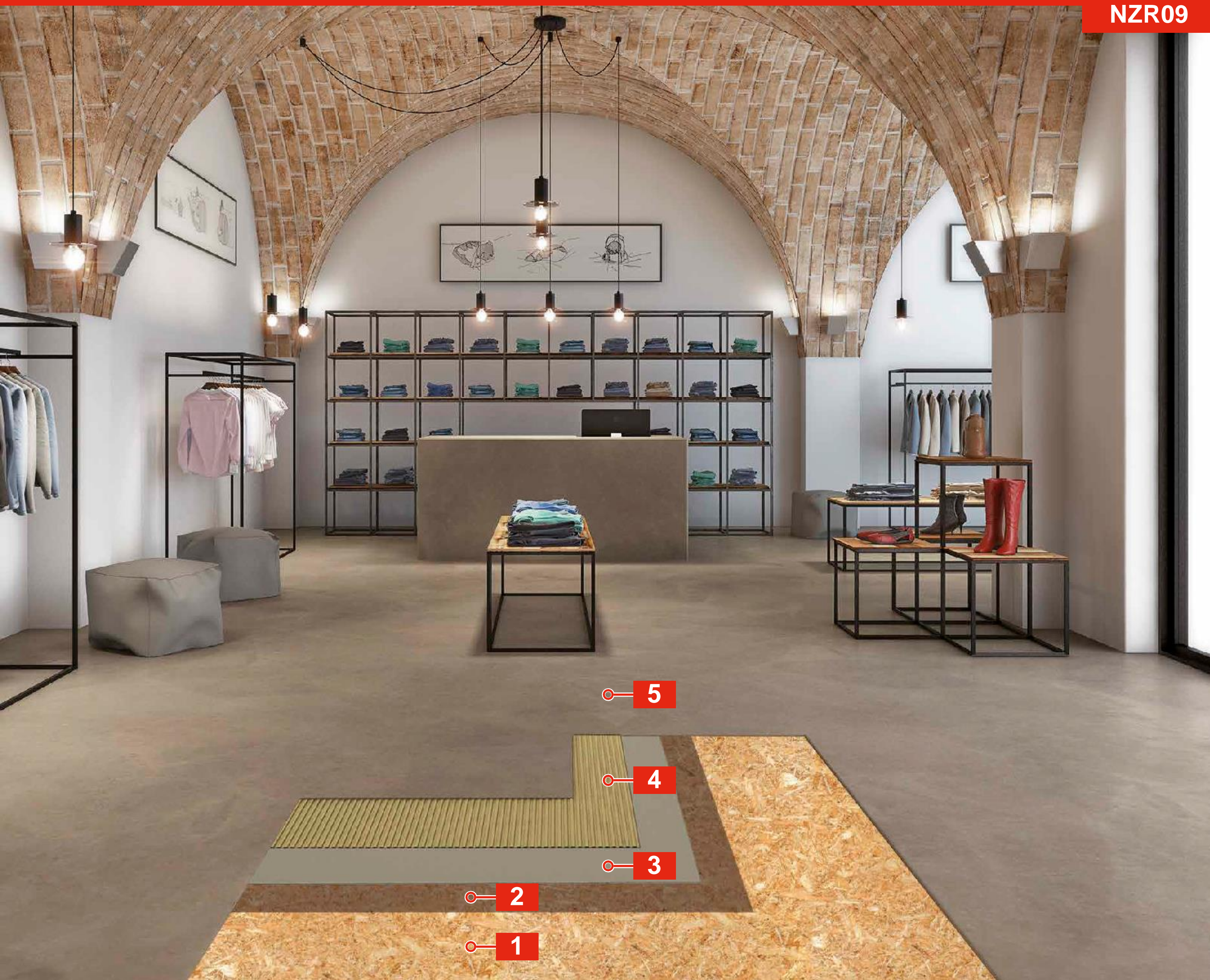


SYSTEM FOR THE INSTALLATION OF LVT OVER A TIMBER/PARTICLE BOARD SUBSTRATE



NZR09



properly prepared timber/
particle board substrate



primer
Eco Prim Grip



levelling compound
Ultraplan Renovation
3240



adhesive
Ultrabond Eco VS90
Plus

LVT floor covering

1

2

3

4

5

Please refer to the corresponding Work Method Statement for complete list of suitable products and installation information

PART 1 SYSTEM

1.1 REFERENCES

1. NZS AS 1884:2013 – Floor Coverings – Resilient Sheet and Tiles – Installation Practices
2. [MAPEI Surface Preparation Requirements – Floor Covering Installation Systems](#)
3. [MAPEI Technical Notebook – Installing Resilient Wall and Floor Coverings](#)

1.2 SUBSTRATE PREPARATION

1. All substrates must be structurally sound, dry, solid and stable. Any dust, grease, oil, paint, or other contaminants present on the surface of the substrate that may inhibit bond, shall be mechanically removed. The substrate should then be cleaned and prepared in accordance with the relevant standards and as per the MAPEI technical data sheets (TDS).
2. The timber or particle board substrate must maintain dimensional stability with minimal movement within the environment that it will be installed, in order to facilitate a long-term successful installation. Seek guidance from the substrate manufacturer.
3. To avoid the levelling compound leaking, small gaps should be filled and smoothed over with [PLANIPREP SC](#) + [LATEX PLUS](#). Larger gaps (up to 5 mm) can be filled using [NIVORAPID](#) mixed with [LATEX PLUS](#), prior to priming.

1.3 PRIMER

A. [ECO PRIM GRIP 2916-2-2018 \(GB\)](#)

1. Multi-purpose, ready-to-use bonding promoter primer made from synthetic acrylic resin and silica inerts with a very low emission of volatile organic compounds (VOC) for render, smoothing and levelling compounds and adhesives for ceramic tiles.
- **APPLICATION:**
 - ◇ Stir ready-to-use primer prior to application, no dilution is required.
 - ◇ Apply primer with either a roller or brush.

1.4 LEVELLING COMPOUND

A. [ULTRAPLAN RENOVATION SCREED 3240 4048-12-2017 \(UK\)](#)

1. Fibre reinforced levelling compound for interiors applied from 3 to 40 mm in a single application.
- **APPLICATION:**
 - ◇ Pour 3.4 to 3.6 litres of potable water into a clean container then add the 20 kg bag of [ULTRAPLAN RENOVATION SCREED 3240](#) while using an electric mixer. Once a lump-free mix is obtained, let it stand for 2 to 3 minutes then briefly remix.
 - ◇ Spread levelling compound from 3 to 40 mm in thickness using a large metal spreader at a slight angle to obtain the desired thickness.
 - ◇ It is recommended to introduce saw cuts once the levelling compound can be walked on for large areas at high thickness to alleviate stress.



1.5 ADHESIVE

- **NOTE:** Prior to the application of the adhesive, ensure the floor covering and substrate are acclimatized to the recommended temperatures and R.H.

A. ULTRABOND ECO VS90 PLUS 5855-9-2015 (GB)

1. Universal high temperature adhesive in water dispersion for resilient floor coverings.

- **APPLICATION:**

- ◇ Before applying, stir the adhesive in the bucket. Apply adhesive evenly to the substrate with a suitable notched trowel.
- ◇ Do not apply the adhesive where flooring material cannot be installed with the adhesive open time.

MAPEI provides technical data sheets (TDS) for all products which should be read in conjunction with this Work Method Statement. The TDS' can be obtained from www.mapei.co.nz, or by clicking directly on the listed products within the PDF.

This Work Method Statement (WMS) provides general recommendations only and is not intended to be interpreted as a generic specification for the application/installation of the listed products. Mapei provides technical data sheets (TDS) for all products which should be read in conjunction with this WMS. The TDS can be obtained from www.mapei.co.nz. Each project differs in exposure/condition, therefore specific recommendations may vary from the information contained above. For recommendations for specific applications/installations please contact MAPEI New Zealand Ltd.

MAPEI New Zealand Ltd. 30 Fisher Crescent, Mt. Wellington, Auckland 1060 NZ • Phone: +64-9-921-1994

